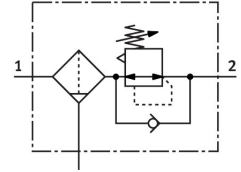



Filter regulator MS6-LFR-1/2-D6-E-P-M-A8-F1A-B

Part number: 8175821

FESTO



 General operating condition

Data sheet

| Feature | Value |
|---|---|
| Size | 6 |
| Series | MS |
| Actuator lock | Rotary knob with detent |
| Mounting position | Vertical +/-5° |
| Grade of filtration | 40 µm |
| Condensate drain | Manually rotating |
| Design | Filter regulator without pressure gauge Directly actuated piston regulator |
| Max. condensate volume | 27.3 ml |
| Controller function | Output pressure constant With secondary venting With return flow function |
| Symbol | 00991590 |
| Pressure gauge (ANALOG) or Pressure display (DIGITAL) | Prepared for G1/8 |
| Operating pressure | 0.1 MPa ... 1 MPa |
| Operating pressure | 1 bar ... 10 bar |
| Pressure regulation range | 0.3 bar ... 7 bar |
| Max. pressure hysteresis | 0.035 MPa |
| Max. pressure hysteresis | 0.35 bar |
| Max. pressure hysteresis | 5.075 psi |
| Standard nominal flow rate (standardised to DIN 1343) | 5300 l/min |
| Operating medium | Compressed air to ISO 8573-1:2010 [7:4:4] Inert gases |
| Note on operating and pilot medium | Compatibility with ester oil not guaranteed |
| Corrosion resistance class CRC | 1 - Low corrosion stress |
| LABS (PWIS) conformity | VDMA24364-B1/B2-L |
| Suitability for the production of Li-ion batteries | Metals with more than 1% by mass of copper, zinc or nickel are excluded from use. The exceptions are nickel in steel, chemically nickel-plated surfaces, circuit boards, cables, electrical plug connectors and coils |
| Cleanroom class | Class 7 according to ISO 14644-1 |
| Storage temperature | -5 °C ... 50 °C |
| Air purity class at output | Compressed air to ISO 8573-1:2010 [7:4:4] |
| Media temperature | -5 °C ... 50 °C |
| Ambient temperature | -5 °C ... 50 °C |
| Product weight | 578 g |

| Feature | Value |
|------------------------------|---|
| Type of mounting | Either: Front panel mounting In-line installation With accessories |
| Pneumatic connection, port 1 | G1/2 |
| Pneumatic connection, port 2 | G1/2 |
| Note on materials | RoHS-compliant |
| Material seals | NBR |
| Material rotary knob | POM |
| Material spring | High-alloy stainless steel |
| Material filter | PE |
| Material housing | PA-reinforced |
| Material bowl | PC |
| Material valve stem | POM |